

Sons of Norway - South Building

1455 West Lake St
Minneapolis, MN 55408

I hereby certify that this plan, specification, or report was prepared by me or under my direct supervision and that I am a duly Registered Architect under the laws of the State of Minnesota

Name

REGISTRATION NO. DATE
Number Date

© 2017 RYAN A+E, INC.

DRAWN BY CHECKED BY
Author Checker
JOB NO. DATE
700420 Issue Date

ISSUE RECORD		
ISSUE #	DATE	DESCRIPTION

PRELIMINARY
NOT FOR CONSTRUCTION

LAND USE
SUBMITTAL
12.15.2017

EXTERIOR
ELEVATIONS

A300



6 COURTYARD SOUTH ELEVATION - 1/16"
A300 1/16" = 1'-0"



5 COURTYARD NORTH ELEVATION - 1/16"
A300 1/16" = 1'-0"



4 SOUTH ELEVATION - 1/16"
A300 1/16" = 1'-0"



3 NORTH ELEVATION - 1/16"
A300 1/16" = 1'-0"



2 WEST ELEVATION - 1/16"
A300 1/16" = 1'-0"



1 EAST ELEVATION - 1/16"
A300 1/16" = 1'-0"

EXTERIOR ELEVATIONS - MATERIAL SCHEDULE		
MATERIAL ID	SECTION	Material Name
BALC-1		Metal - Aluminum - Balcony (BALC-1)
BR-13		BR-13, Face Brick - Norman, 1/2 lap running bond (RED)
BR-14		BR-14, Face Brick - Norman, 1/2 lap running bond (ORANGE)
CB-01B		CB-01B, Siding - Fiber Cement - smooth panels, exposed fasteners (DarkBronze)
CB-01C		CB-01C, Siding - Fiber Cement - smooth panels, exposed fasteners (WHITE)
CB-01D		CB-01D, Siding - Fiber Cement - smooth panels, exposed fasteners (RED)
CB-01E		CB-01E, Siding - Fiber Cement - smooth panels, exposed fasteners (ORANGE)
CMU-31		CMU-31, CMU - decorative, burnished block
FGW-1	08 54 13	Window - FGW - 1
MP-01D		MP-01D, Wall Panels - ACM, clip installation (DARK BRONZE)
MP-31		MP-31, Wall Panels - ACM, clip installation (BLACK)
TB-2		TB-2, Thin Brick - (THIN Norman, 1/2 lap running bond) BUFF
TR-1		Finishes - Exterior Trim 1 TR-1
WIN FG-1		WIN FG-1, Fiberglass windows - (Fixed, outswing, single-hung)

FACADE MATERIALS					
SOUTH			EAST - AREA A		
BRICK	1,950 SF	32%	BRICK	1,570 SF	28%
METAL PANEL	0%		METAL PANEL	0%	
FIBER CEMENT	950 SF	16%	FIBER CEMENT	880 SF	15%
STONE	1,220 SF	22%	STONE	1,280 SF	23%
GLAZING	1,860 SF	30%	GLAZING	1,875 SF	34%
S. COURTYARD			WEST - AREA A		
BRICK	950 SF	54%	BRICK	730 SF	19%
METAL PANEL	0%		METAL PANEL	0%	
FIBER CEMENT	180 SF	10%	FIBER CEMENT	1,320 SF	26%
STONE	0%		STONE	640 SF	14%
GLAZING	630 SF	36%	CMU	320 SF	9%
			GLAZING	1,550 SF	32%

- ### EXTERIOR ELEVATION GENERAL NOTES
- RESIDENTIAL UNIT WINDOWS - FIBERGLASS SINGLE HUNG WITH DIVIDED UPPER LIGHT WHERE INDICATED ON ELEVATIONS.
 - WHERE RESIDENTIAL UNIT WINDOWS/DOORS OCCUR IN BRICK/TIN BRICK WALL, TYPICAL DETAILS AS FOLLOW:
 - CAST STONE SILL (COLOR TO MATCH SURROUNDING BRICK)
 - MODULAR BRICK SOLDIER COURSE AT HEAD
 - RESIDENTIAL UNIT BALCONY DOORS - FIBERGLASS SLIDING WITH MUNTIN PATTERN WHERE SHOWN ON ELEVATIONS.
 - MONUMENTAL WINDOWS AT AMENITY DECK COMMON SPACES - FIBERGLASS FIXED
 - ASSUME 36" STONE BASE AT ALL EXTERIOR WALLS UNLESS SHOWN OTHERWISE ON ELEVATIONS.
 - ASSUME METAL GUTTERS AND DOWNSPOUTS FOR ALL SLOPED ROOFS.
 - ASSUME PAVERS, ALUMINUM RAILINGS, AND PRIVACY SCREENS AT ALL RESIDENTIAL TERRACES.
 - SEE SHEET G101 FOR MATERIAL ID.
 - REFER TO SHEET A504 FOR EXTERIOR TRIM LEGEND.



RYAN A+E, INC.
533 South Third Street, Suite 100
Minneapolis, MN 55415
612-492-4000 tel
612-492-3000 fax

WWW.RYANCOMPANIES.COM

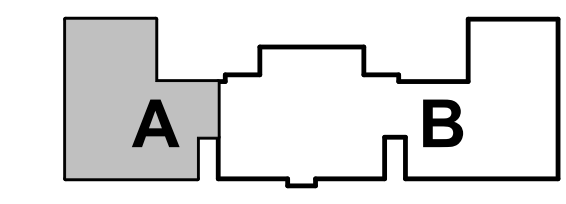
OWNER



CONSULTANTS



KEY PLAN



PROJECT INFORMATION

Sons of Norway - South Building

1455 West Lake St
Minneapolis, MN 55408

I hereby certify that this plan, specification, or report was prepared by me or under my direct supervision and that I am a duly Registered Architect under the laws of the State of Minnesota.

Name _____

REGISTRATION NO. _____ DATE _____
Number _____ Date _____

© 2017 RYAN A+E, INC.

DRAWN BY _____ CHECKED BY _____
Author _____ Checker _____
JOB NO. _____ DATE _____
700420 _____ Issue Date _____

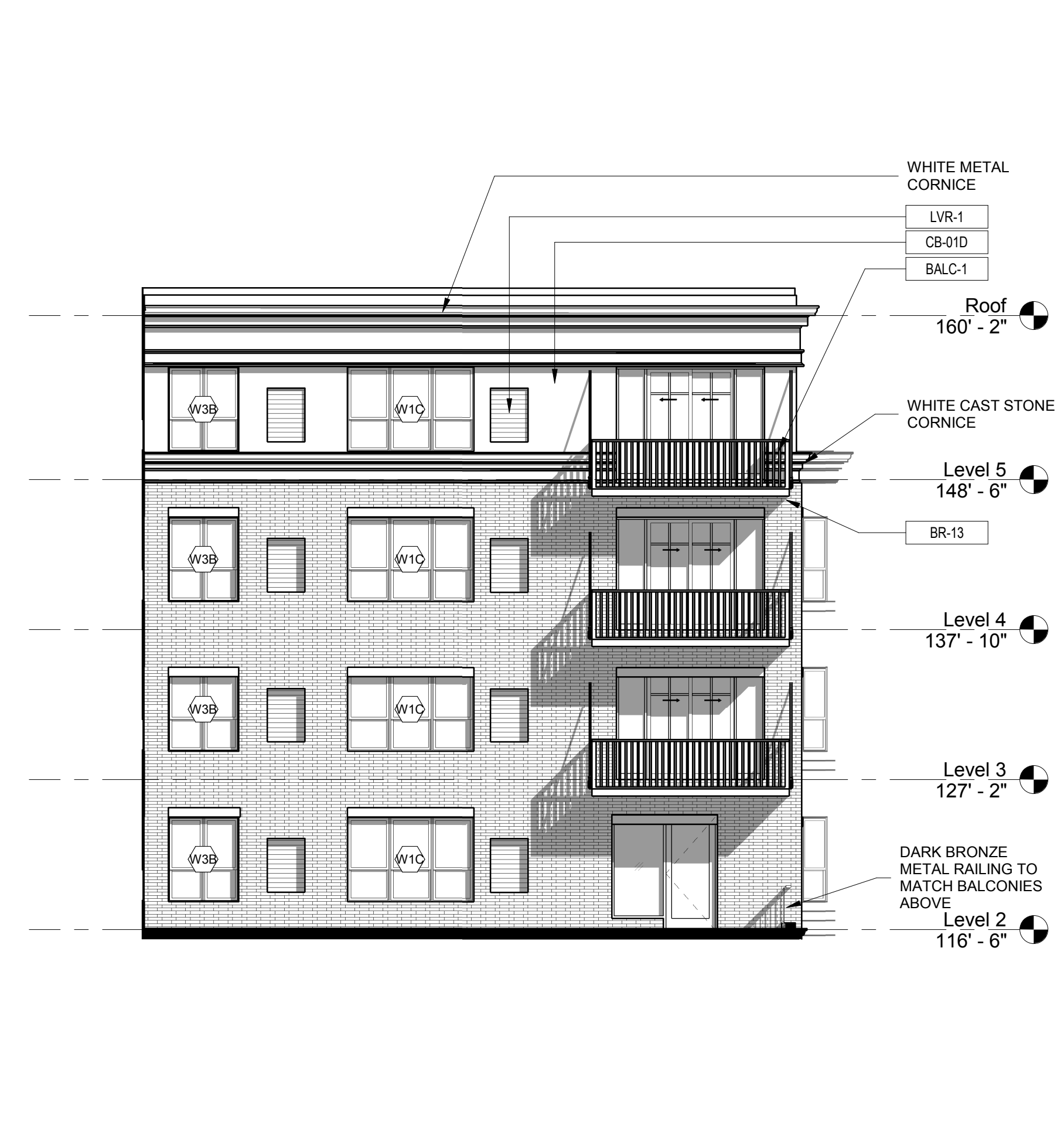
ISSUE RECORD		
ISSUE #	DATE	DESCRIPTION

PRELIMINARY
NOT FOR CONSTRUCTION

LAND USE SUBMITTAL
12.15.2017

EXTERIOR ELEVATIONS - AREA A

A300A



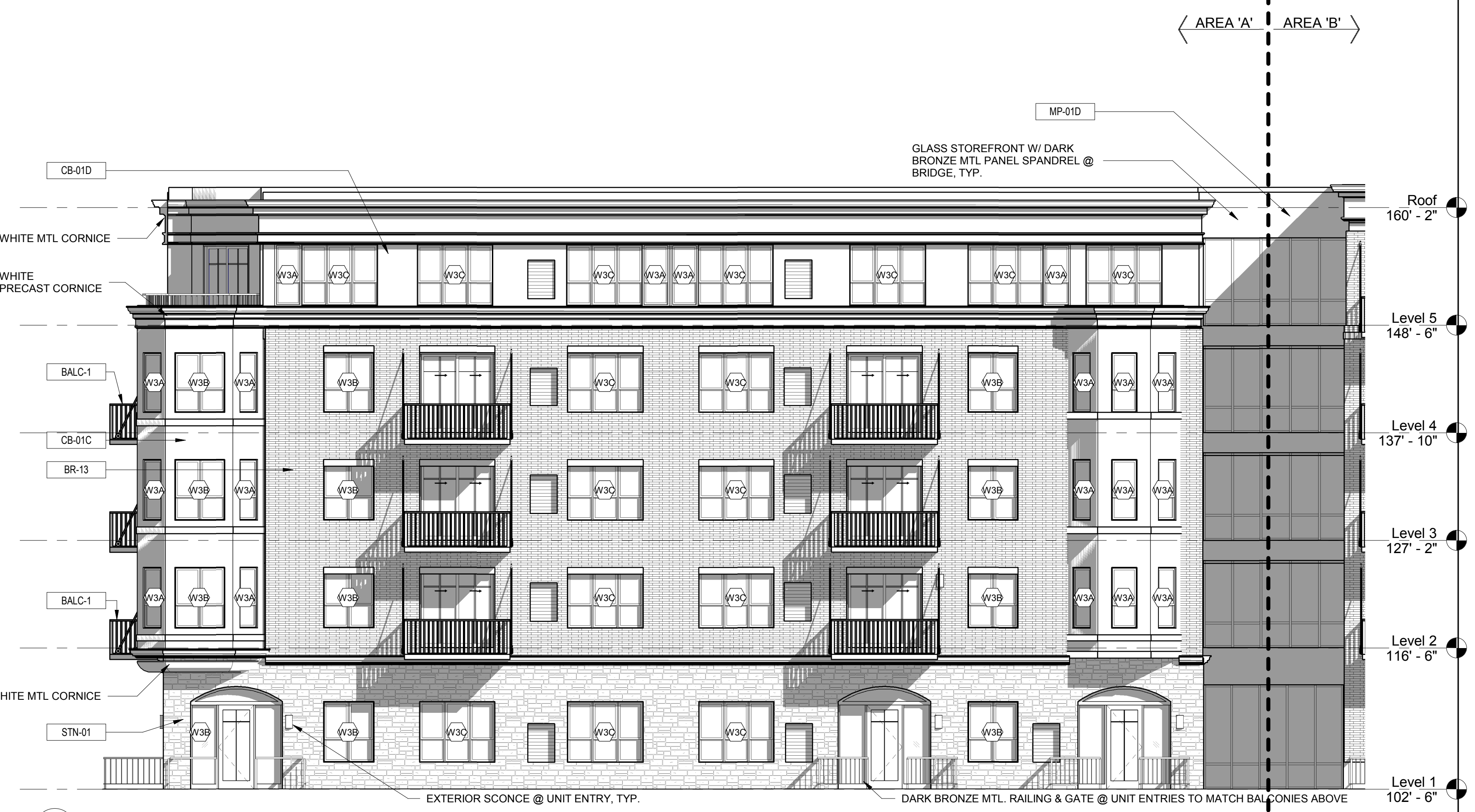
1 S. COURTYARD - S. ELEV.
A300A 1/8" = 1'-0"



3 WEST ELEVATION - AREA A
A300A 1/8" = 1'-0"



4 SOUTH ELEVATION
A300A 1/8" = 1'-0"



2 EAST ELEVATION - AREA A
A300A 1/8" = 1'-0"

12/17/2017 8:32:17 AM

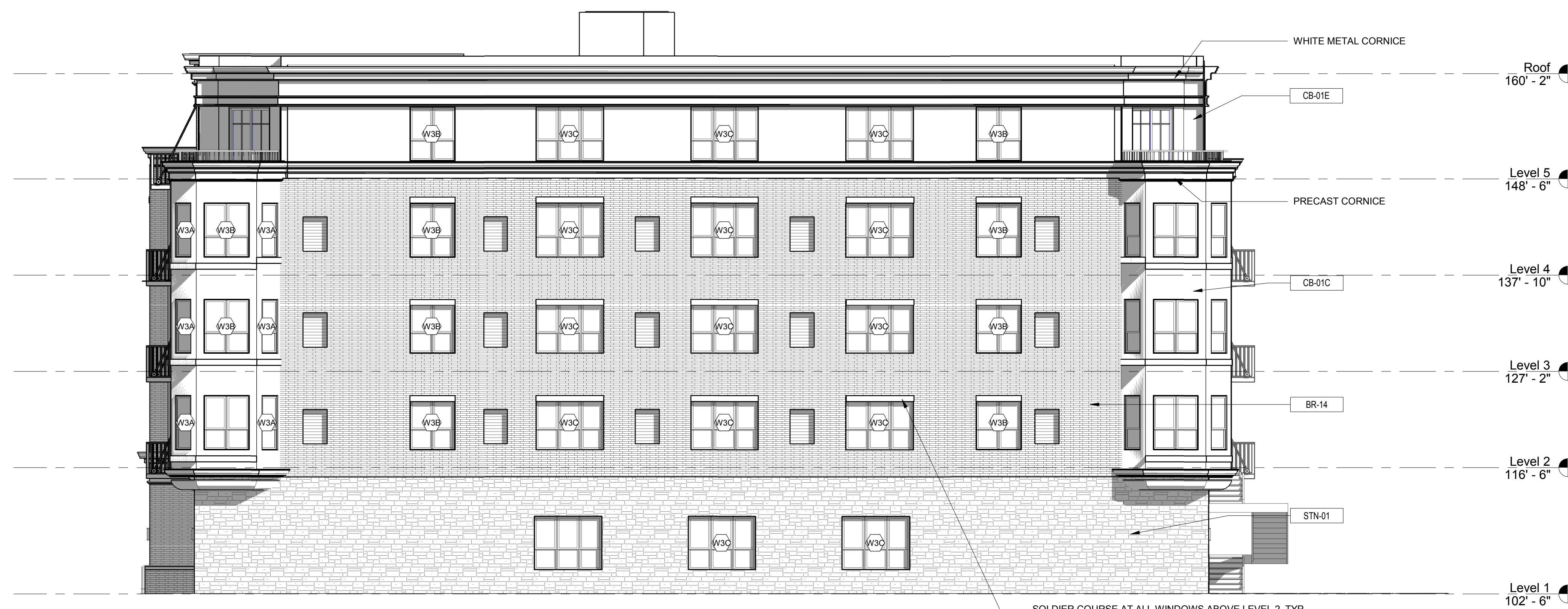
EXTERIOR ELEVATIONS - MATERIAL SCHEDULE		
MATERIAL ID	SECTION	Material Name
BALC-1		Metal - Aluminum - Balcony (BALC-1)
BR-13		BR-13 Face Brick - Norman, 1/2 lap running bond (RED)
BR-14		BR-14 Face Brick - Norman, 1/2 lap running bond (ORANGE)
CB-01B		CB-01B Siding - Fiber Cement - smooth panels, exposed fasteners (DarkBronze)
CB-01C		CB-01C Siding - Fiber Cement - smooth panels, exposed fasteners (WHITE)
CB-01D		CB-01D Siding - Fiber Cement - smooth panels, exposed fasteners (RED)
CB-01E		CB-01E Siding - Fiber Cement - smooth panels, exposed fasteners (ORANGE)
CMU-31		CMU-31 CMU - decorative, burnished block
FGW-1	08 54 13	Window - FGW - 1
MP-01D		MP-01D Wall Panels - ACM, clip installation (DARK BRONZE)
MP-31		MP-31 Wall Panels - ACM, clip installation (BLACK)
TB-2		TB-2 Thin Brick - THIN Norman, 1/2 lap running bond) BLUFF
TR-1		Finishes - Exterior Trim 1 TR-1
WIN FG-1		WIN FG-1 Fiberglass windows - (Fixed, outswing, single-hung)

**EXTERIOR ELEVATION
GENERAL NOTES**

- RESIDENTIAL UNIT WINDOWS - FIBERGLASS SINGLE HUNG WITH DIVIDED UPPER LIGHT WHERE INDICATED ON ELEVATIONS
- WHERE RESIDENTIAL UNIT WINDOWS/DOORS OCCUR IN BRICK/TIN BRICK WALL, TYPICAL DETAILS AS FOLLOW:
A. CAST STONE SILL (COLOR TO MATCH SURROUNDING BRICK)
B. MODULAR BRICK SOLDIER COURSE AT HEAD
- RESIDENTIAL UNIT BALCONY DOORS - FIBERGLASS SLIDING WITH MUNTIN PATTERN WHERE SHOWN ON ELEVATIONS
- MONUMENTAL WINDOWS AT AMENITY DECK COMMON SPACES - FIBERGLASS FIXED
- ASSUME 36" STONE BASE AT ALL EXTERIOR WALLS UNLESS SHOWN OTHERWISE ON ELEVATIONS
- ASSUME METAL GUTTERS AND DOWNSPOUTS FOR ALL SLOPED ROOFS
- ASSUME PAVERS, ALUMINUM RAILINGS, AND PRIVACY SCREENS AT ALL RESIDENTIAL TERRACES
- SEE SHEET G101 FOR MATERIAL ID
- REFER TO SHEET A504 FOR EXTERIOR TRIM LEGEND

FAÇADE MATERIALS

NORTH			EAST - AREA B		
BRICK	3,540 SF	57%	BRICK	7,320 SF	50%
METAL PANEL		0%	METAL PANEL	250 SF	2%
FIBER CEMENT	920 SF	11%	FIBER CEMENT	1,780 SF	12%
STONE	1,300 SF	16%	STONE	990 SF	7%
GLAZING	1,280 SF	16%	GLAZING	4,510 SF	29%



2 NORTH ELEVATION
A300B 1/8" = 1'-0"



1 EAST ELEVATION - Area B
A300B 1/8" = 1'-0"



RYAN A+E, INC.
533 South Third Street, Suite 100
Minneapolis, MN 55415
612-492-4000 tel
612-492-3000 fax

WWW.RYANCOMPANIES.COM

OWNER

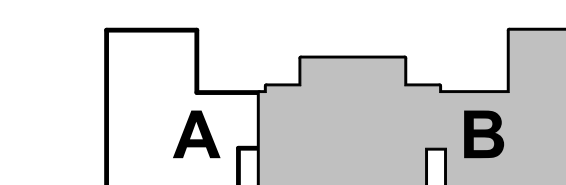


CONSULTANTS



EVERY RELATIONSHIP. EVERY DAY.

KEY PLAN



PROJECT INFORMATION

**Sons of Norway -
South Building**

1455 West Lake St
Minneapolis, MN 55408

I hereby certify that this plan, specification, or report was prepared by me or under my direct supervision and that I am a duly Registered Architect under the laws of the State of Minnesota

Name

REGISTRATION NO. DATE
Number Date

© 2017 RYAN A+E, INC.

DRAWN BY CHECKED BY
Author Checker
JOB NO. DATE
700420 Issue Date

ISSUE RECORD

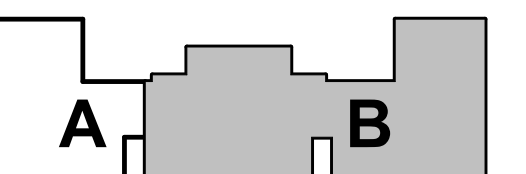
ISSUE # DATE DESCRIPTION

PRELIMINARY
NOT FOR CONSTRUCTION

LAND USE
SUBMITTAL
12.15.2017

EXTERIOR
ELEVATIONS -
AREA B

A300B



Sons of Norway - South Building

1455 West Lake St
Minneapolis, MN 55408

I hereby certify that this plan, specification, or report was prepared by me or under my direct supervision and that I am a duly Registered Architect under the laws of the State of Minnesota

Name

REGISTRATION NO. DATE
Number Date

© 2017 RYAN A+E, INC.

DRAWN BY CHECKED BY
Author Checker
JOB NO. DATE
700420 Issue Date

ISSUE RECORD
ISSUE # | DATE | DESCRIPTION

PRELIMINARY
NOT FOR CONSTRUCTION

LAND USE SUBMITTAL
12.15.2017

EXTERIOR ELEVATIONS - AREA B

A300C

EXTERIOR ELEVATIONS - MATERIAL SCHEDULE		
MATERIAL ID	SECTION	Material Name
BALC-1		Metal - Aluminum - Balcony (BALC-1)
BR-13		BR-13_Face Brick - Norman, 1/2 lap running bond (RED)
BR-14		BR-14_Face Brick - Norman, 1/2 lap running bond (ORANGE)
CB-01B		CB-01B_Siding - Fiber Cement - smooth panels, exposed fasteners (DarkBronze)
CB-01C		CB-01C_Siding - Fiber Cement - smooth panels, exposed fasteners (WHITE)
CB-01D		CB-01D_Siding - Fiber Cement - smooth panels, exposed fasteners (RED)
CB-01E		CB-01E_Siding - Fiber Cement - smooth panels, exposed fasteners (ORANGE)
CMU-31		CMU-31_CMU - decorative, burnished block
FGW-1	08 54 13	Window - FGW - 1
MP-01D		MP-01D_Wall Panels - ACM, clip installation (DARK BRONZE)
MP-31		MP-31_Wall Panels - ACM, clip installation (BLACK)
TB-2		TB-2_Thin Brick - (THIN Norman, 1/2 lap running bond) BUFF
TR-1		Finishes - Exterior Trim 1 TR-1
WIN FG-1		WIN FG-1_Fiberglass windows - (Fixed, outswing, single-hung)

EXTERIOR ELEVATION GENERAL NOTES

- RESIDENTIAL UNIT WINDOWS - FIBERGLASS SINGLE HUNG WITH DIVIDED UPPER LIGHT WHERE INDICATED ON ELEVATIONS.
- WHERE RESIDENTIAL UNIT WINDOWS/DOORS OCCUR IN BRICK/TIN BRICK WALL, TYPICAL DETAILS AS FOLLOW:
A. CAST STONE SILL (COLOR TO MATCH SURROUNDING BRICK)
B. MODULAR BRICK SOLDIER COURSE AT HEAD
- RESIDENTIAL UNIT BALCONY DOORS - FIBERGLASS SLIDING WITH MUNTIN PATTERN WHERE SHOWN ON ELEVATIONS.
- MONUMENTAL WINDOWS AT AMENITY DECK COMMON SPACES - FIBERGLASS FIXED
- ASSUME 36" STONE BASE AT ALL EXTERIOR WALLS UNLESS SHOWN OTHERWISE ON ELEVATIONS.
- ASSUME METAL GUTTERS AND DOWNSPOUTS FOR ALL SLOPED ROOFS.
- ASSUME PAVERS, ALUMINUM RAILINGS, AND PRIVACY SCREENS AT ALL RESIDENTIAL TERRACES.
- SEE SHEET G101 FOR MATERIAL ID.
- REFER TO SHEET A504 FOR EXTERIOR TRIM LEGEND.

FACADE MATERIALS

N. COURTYARD			WEST - AREA B		
BRICK	950 SF	53%	BRICK	4,430 SF	29%
METAL PANEL		0%	METAL PANEL		0%
FIBER CEMENT	180 SF	11%	FIBER CEMENT	5,480 SF	35%
STONE		0%	STONE		5%
GLAZING	630 SF	36%	GLAZING	3,500 SF	23%
			CMU	1,150 SF	8%



Sons of Norway - South Building

1455 West Lake St
Minneapolis, MN 55408

I hereby certify that this plan, specification, or report was prepared by me or under my direct supervision and that I am a duly Registered Architect under the laws of the State of Minnesota

Name _____

REGISTRATION NO. DATE
Number Date

© 2017 RYAN A+E, INC.

DRAWN BY CHECKED BY
Author Checker
JOB NO. DATE
700420 Issue Date

ISSUE RECORD		
ISSUE #	DATE	DESCRIPTION

PRELIMINARY
NOT FOR CONSTRUCTION

LAND USE SUBMITTAL

12.15.2017

3D VIEWS

A350



3 NORTHWEST
A350



2 NORTHEAST
A350



5 SOUTHWEST
A350



4 SOUTHEAST
A350