

Sons of Norway - North Building

1455 W Lake St
Minneapolis, MN 55408

I hereby certify that this plan, specification, or report was prepared by me or under my direct supervision and that I am a duly Registered Architect under the laws of the State of Minnesota.

Name _____

REGISTRATION NO. DATE
Number Date

© 2017 RYAN A+E, INC.
DRAWN BY CHECKED BY
Author Checker
JOB NO. DATE
700420 Issue Date

ISSUE RECORD
ISSUE # | DATE | DESCRIPTION

PRELIMINARY
NOT FOR CONSTRUCTION

LAND USE
SUBMITTAL
12.15.2017

EXTERIOR
ELEVATIONS

A300



4 EAST ELEVATION1
A300 1/16" = 1'-0"



3 WEST ELEVATION1
A300 1/16" = 1'-0"



1 NORTH ELEVATION1
A300 1/16" = 1'-0"



2 SOUTH ELEVATION1
A300 1/16" = 1'-0"

EXTERIOR ELEVATIONS - MATERIAL SCHEDULE			
MATERIAL ID	SECTION	DESCRIPTION	UNIFORMAT
ALUM-2	05 73 00	Metal - Privacy Screen	
APC-1		APC-1 Architectural Precast Concrete - (BLACK)	
BALC-1		Metal - Aluminum - Balcony (BALC-1)	
BR-11		BR-11 Face Brick - Norman, 1/2 lap running bond (WHITE)	
BR-12		BR-12 Face Brick - Norman, 1/2 lap running bond (BUFF)	
CAP-2		Metal - Metal Coping 2" CAP-2	
CB-01A		CB-01A Siding - Fiber-cement - smooth panels (BLACK)	
CW-01		CW-01 Aluminum Curtain Wall - Field-glazed pressure wall, thermally broken, stick built	
GL-21	08 81 00	GL-21 Glass - Insulating - Low-E coating, argon filled clear	
GL-21T	08 81 00	GL-21T Glass - Insulating, Tempered - Low-E coating, argon filled clear	
LVR-1		Louver - Magic Pack (BROWN)	
LVR-2		Louver - Magic Pack (BLACK)	
LVR-3		Louver - Magic Pack (WHITE)	
MP-31A		MP-31A Wall panels - ACM - clip installation (WHITE)	
PT-01		PT-1 Typical exterior paint (black/dk grey)	
STN-15		STN-15 Stone - Granite - polished finish, black mesabe	
TB-1		TB-1 Thin Brick - Norman, 1/2 lap running bond (WHITE)	
TR-1		Finishes - Exterior Trim 1 TR-1	
WIN FG-1		WIN FG-1 Fiberglass windows - (Fixed, outswing, single-hung)	

**EXTERIOR ELEVATION
GENERAL NOTES**

- RESIDENTIAL UNIT WINDOWS - FIBERGLASS SINGLE HUNG WITH DIVIDED UPPER LIGHT WHERE INDICATED ON ELEVATIONS.
- WHERE RESIDENTIAL UNIT WINDOWS/DOORS OCCUR IN BRICK OR THIN BRICK WALL, TYPICAL DETAILS AS FOLLOW:
A. CAST STONE SILL (COLOR TO MATCH SURROUNDING BRICK)
B. MODULAR BRICK SOLDIER COURSE AT HEAD
- RESIDENTIAL UNIT BALCONY DOORS - FIBERGLASS SLIDING WITH MUNTIN PATTERN WHERE SHOWN ON ELEVATIONS.
- MONUMENTAL WINDOWS AT GROUND FLOOR COMMON SPACES - ALUMINUM STOREFRONT.
- OFFICE / RETAIL WINDOWS - ALUMINUM CURTAIN WALL, BLACK OR DARK BRONZE, MUNTIN PATTERN AS SHOWN ON ELEVATIONS.
- ASSUME 36" STONE BASE AT ALL WALLS UNLESS OTHERWISE INDICATED ON ELEVATIONS.
- ASSUME METAL GUTTERS AND DOWNSPOUTS FOR ALL SLOPED ROOFS.
- ASSUME PAVERS, RAILINGS (ALUMINUM OR GLASS AS SHOWN ON ELEVATIONS), AND PRIVACY SCREENS AT ALL RESIDENTIAL TERRACES.
- SEE SHEET G101 FOR MATERIAL ID.
- REFER TO SHEET A504 FOR EXTERIOR TRIM LEGEND.

FACADE MATERIALS

WEST - AREA A

BRICK	7,900 SF	37%
METAL PANEL	2,560 SF	12%
FIBER CEMENT	2,135 SF	10%
STONE	1,070 SF	5%
GLAZING	7,690 SF	36%



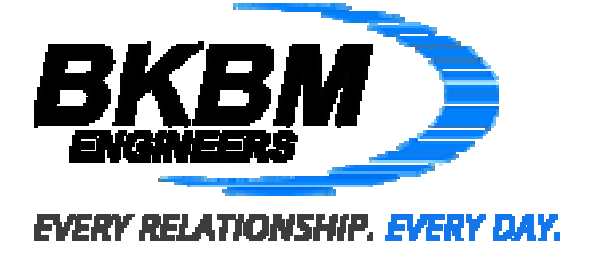
RYAN A+E, INC.
533 South Third Street, Suite 100
Minneapolis, MN 55415
612-492-4000 tel
612-492-3000 fax

WWW.RYANCOMPANIES.COM

OWNER



CONSULTANTS
af la aune fernandez landscape architects



EVERY RELATIONSHIP. EVERY DAY.
KEY PLAN

PROJECT INFORMATION

Sons of Norway - North Building

1455 W Lake St
Minneapolis, MN 55408

I hereby certify that this plan, specification, or report was prepared by me or under my direct supervision and that I am a duly Registered Architect under the laws of the State of Minnesota

Name _____

REGISTRATION NO. _____ DATE _____
Number _____ Date _____

© 2017 RYAN A+E, INC.

DRAWN BY: Author _____ CHECKED BY: Checker _____
JOB NO. 700420 DATE Issue Date _____

ISSUE RECORD
ISSUE # | DATE | DESCRIPTION

**PRELIMINARY
NOT FOR CONSTRUCTION**

LAND USE SUBMITTAL
12.15.2017

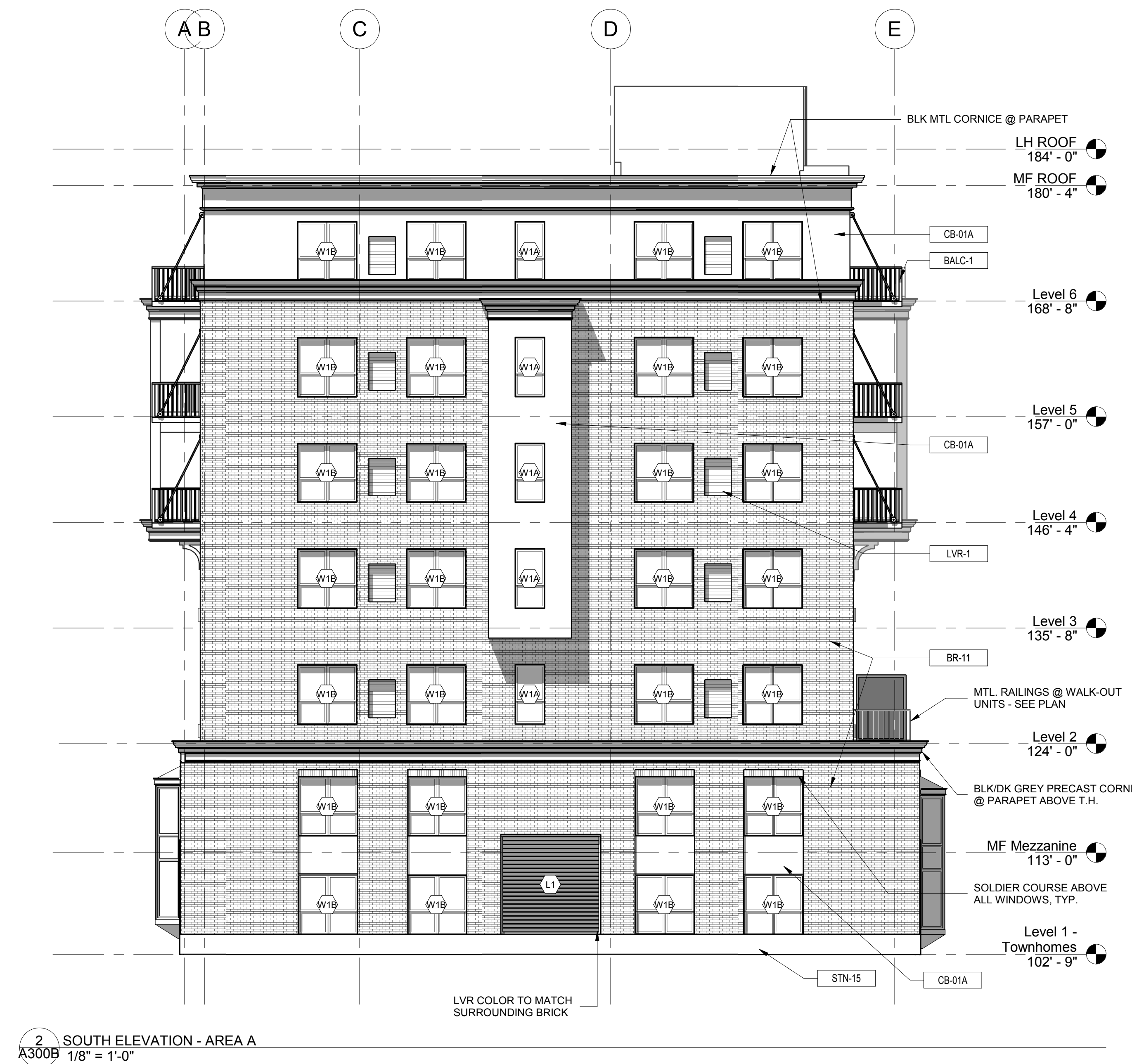
EXTERIOR ELEVATIONS - AREA A

A300A



12/18/2017 12:55:34 PM

MATERIAL ID	SECTION	DESCRIPTION	UNIFORMAT
ALUM-2	05 73 00	Metal - Privacy Screen	
APC-1		APC-1 Architectural Precast Concrete - (BLACK)	
BALC-1		Metal - Aluminum - Balcony (BALC-1)	
BR-11		BR-11 Face Brick - Norman, 1/2 lap running bond (WHITE)	
BR-12		BR-12 Face Brick - Norman, 1/2 lap running bond (BUFF)	
CAP-2		Metal - Metal Coping 2 - CAP-2	
CB-01A		CB-01A Siding - Fiber-cement - smooth panels (BLACK)	
CW-01		CW-01 Aluminum Curtain Wall - Field-glazed pressure wall, thermally broken, stick built	
GL-21	08 81 00	GL-21 - Glass - Insulating - Low-E coating, argon filled clear	
GL-21T	08 81 00	GL-21T - Glass - Insulating - Tempered - Low-E coating, argon filled clear	
LVR-1		Louver - Magic Pack (BROWN)	
LVR-2		Louver - Magic Pack (BLACK)	
LVR-3		Louver - Magic Pack (WHITE)	
MP-31A		MP-31A Wall panels - ACM - clip installation (WHITE)	
PT-01		PT-1 - Typical exterior paint (black/dk grey)	
STN-15		STN-15 Stone - Granite - polished finish, black mesabe	
TB-1		TB-1 Thin Brick - Norman, 1/2 lap running bond (WHITE)	
TR-1		Finishes - Exterior Trim 1 TR-1	
WIN-FG-1		WIN-FG-1 Fiberglass windows - (Fixed, outswing, single-hung)	



2 SOUTH ELEVATION - AREA A
A300B 1/8" = 1'-0"

- ### EXTERIOR ELEVATION GENERAL NOTES
- RESIDENTIAL UNIT WINDOWS - FIBERGLASS SINGLE HUNG WITH DIVIDED UPPER LIGHT WHERE INDICATED ON ELEVATIONS. WHERE RESIDENTIAL UNIT WINDOWS/DOORS OCCUR IN BRICK OR THIN BRICK WALL, TYPICAL DETAILS AS FOLLOW:
 - CAST STONE SILL (COLOR TO MATCH SURROUNDING BRICK)
 - MODULAR BRICK SOLDIER COURSE AT HEAD
 - RESIDENTIAL UNIT BALCONY DOORS - FIBERGLASS SLIDING WITH MUNTIN PATTERN WHERE SHOWN ON ELEVATIONS. MONUMENTAL WINDOWS AT GROUND FLOOR COMMON SPACES - ALUMINUM STOREFRONT.
 - OFFICE / RETAIL WINDOWS - ALUMINUM CURTAIN WALL, BLACK OR DARK BRONZE. MUNTIN PATTERN AS SHOWN ON ELEVATIONS.
 - ASSUME 36" STONE BASE AT ALL WALLS UNLESS OTHERWISE INDICATED ON ELEVATIONS.
 - ASSUME METAL CUTTERS AND DOWNSPOUTS FOR ALL SLOPED ROOFS.
 - ASSUME PAVERS, RAILINGS (ALUMINUM OR GLASS AS SHOWN ON ELEVATIONS), AND PRIVACY SCREENS AT ALL RESIDENTIAL TERRACES.
 - SEE SHEET G101 FOR MATERIAL ID.
 - REFER TO SHEET A504 FOR EXTERIOR TRIM LEGEND.

FACADE MATERIALS

EAST - AREA A			SOUTH - AREA A		
BRICK	6,875 SF	32%	BRICK	3,270 SF	61%
METAL PANEL	4,515 SF	21%	METAL PANEL	0 SF	0%
FIBER CEMENT	2,580 SF	12%	FIBER CEMENT	535 SF	10%
STONE	1,075 SF	5%	STONE	150 SF	3%
GLAZING	6,500 SF	30%	GLAZING	1,410 SF	26%

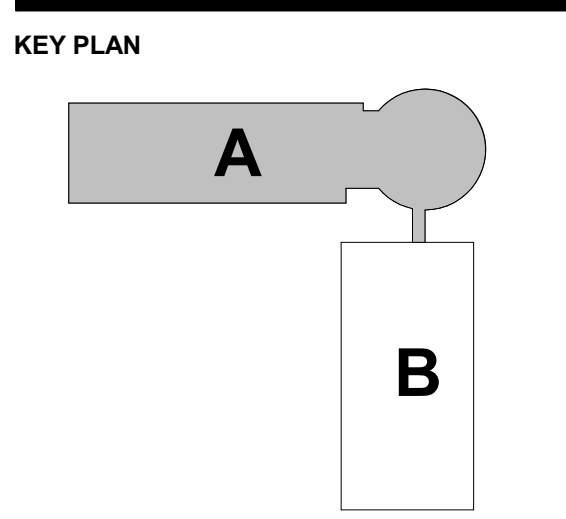
RYAN A+E, INC.
533 South Third Street, Suite 100
Minneapolis, MN 55415
612-492-4000 tel
612-492-3000 fax

WWW.RYANCOMPANIES.COM

OWNER
WEIDNER
APARTMENT HOMES

CONSULTANTS
af fernandez
landscape architects

BKBM
ENGINEERS
EVERY RELATIONSHIP. EVERY DAY.



PROJECT INFORMATION
Sons of Norway - North Building
1455 W Lake St
Minneapolis, MN 55408

I hereby certify that this plan, specification, or report was prepared by me or under my direct supervision and that I am a duly Registered Architect under the laws of the State of Minnesota

Name _____

REGISTRATION NO.	DATE
Number _____	Date _____

© 2017 RYAN A+E, INC.

DRAWN BY	CHECKED BY
Author _____	Checker _____
JOB NO.	DATE
700420	Issue Date _____

ISSUE RECORD		
ISSUE #	DATE	DESCRIPTION

PRELIMINARY
NOT FOR CONSTRUCTION

LAND USE SUBMITTAL
12.15.2017
EXTERIOR ELEVATIONS - AREA A

A300B



1 EAST ELEVATION @ BRIDGE
A300B 1/8" = 1'-0"

12/18/2017 12:56:48 PM

EXTERIOR ELEVATIONS - MATERIAL SCHEDULE			
MATERIAL ID	SECTION	DESCRIPTION	UNIFORMAT
ALUM - 2	05 73 00	Metal - Privacy Screen	
APC-1		APC-1_Architectural Precast Concrete - (BLACK)	
BALC-1		Metal - Aluminum - Balczyz (BALC-1)	
BR-11		BR-11_Face Brick - Norman, 1/2 lap running bond (WHITE)	
BR-12		BR-12_Face Brick - Norman, 1/2 lap running bond (BUFF)	
CAP-2		Metal - Metal Coping 2 - CAP-2	
CB-01A		CB-01A_Siding - Fiber-cement - smooth panels (BLACK)	
CW-01		CW-01_Aluminum Curtain Wall - Field-glazed pressure wall, thermally broken, stick built	
GL-21	08 81 00	GL-21 - Glass - Insulating - Low-E coating, argon filled clear	
GL-21T	08 81 00	GL-21T - Glass - Insulating, Tempered - Low-E coating, argon filled clear	
LVR-1		Louver - Magic Pack (BROWN)	
LVR-2		Louver - Magic Pack (BLACK)	
LVR-3		Louver - Magic Pack (WHITE)	
MP-31A		MP-31A_Wall panels - ACM - clip installation (WHITE)	
PT-1		PT-1 - Typical exterior paint (black/dk grey)	
STN-15		STN-15_Stone - Granite - polished finish, black mesabe	
TB-1		TB-1_Thin Brick - Norman, 1/2 lap running bond (WHITE)	
TR-1		Finishes - Exterior Trim T TR-1	
WIN FG-1		WIN FG-1_Fiberglass windows - (Fixed, outswing, single-hung)	



3 EAST ELEVATION - AREA B
A300C 1/8" = 1'-0"

- ### EXTERIOR ELEVATION GENERAL NOTES
- RESIDENTIAL UNIT WINDOWS - FIBERGLASS SINGLE HUNG WITH DIVIDED UPPER LIGHT WHERE INDICATED ON ELEVATIONS.
 - WHERE RESIDENTIAL UNIT WINDOWS/DOORS OCCUR IN BRICK OR THIN BRICK WALL, TYPICAL DETAILS AS FOLLOW:
A. CAST STONE SILL (COLOR TO MATCH SURROUNDING BRICK)
B. MODULAR BRICK SOLDIER COURSE AT HEAD
 - RESIDENTIAL UNIT BALCONY DOORS - FIBERGLASS SLIDING WITH MUNTIN PATTERN WHERE SHOWN ON ELEVATIONS. MONUMENTAL WINDOWS AT GROUND FLOOR COMMON SPACES - ALUMINUM STOREFRONT.
 - OFFICE / RETAIL WINDOWS - ALUMINUM CURTAIN WALL, BLACK OR DARK BRONZE, MUNTIN PATTERN AS SHOWN ON ELEVATIONS.
 - ASSUME 36" STONE BASE AT ALL WALLS UNLESS OTHERWISE INDICATED ON ELEVATIONS.
 - ASSUME METAL GUTTERS AND DOWNSPOUTS FOR ALL SLOPED ROOFS.
 - ASSUME PAVERS, RAILINGS (ALUMINUM OR GLASS AS SHOWN ON ELEVATIONS), AND PRIVACY SCREENS AT ALL RESIDENTIAL TERRACES.
 - SEE SHEET G101 FOR MATERIAL ID.
 - REFER TO SHEET A504 FOR EXTERIOR TRIM LEGEND.

FAÇADE MATERIALS

NORTH - AREA A/B			EAST - AREA B		
BRICK	6,780 SF	32%	BRICK	5,800 SF	62%
METAL PANEL	2,400 SF	10.5%	METAL PANEL		0%
FIBER CEMENT	2,025 SF	9.5%	FIBER CEMENT	650 SF	7%
STONE	500 SF	6%	STONE	320 SF	3%
GLAZING	9,300 SF	42%	GLAZING	2,740 SF	30%



RYAN A+E, INC.
533 South Third Street, Suite 100
Minneapolis, MN 55415
612-492-4000 tel
612-492-3000 fax

WWW.RYANCOMPANIES.COM

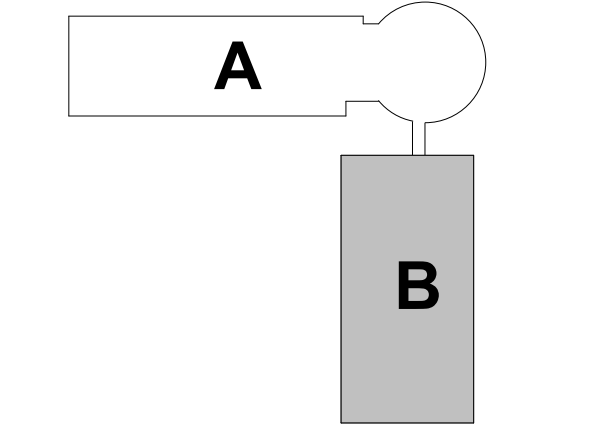
OWNER



CONSULTANTS



KEY PLAN



PROJECT INFORMATION

Sons of Norway - North Building

1455 W Lake St
Minneapolis, MN 55408

I hereby certify that this plan, specification, or report was prepared by me or under my direct supervision and that I am a duly Registered Architect under the laws of the State of Minnesota

Name

REGISTRATION NO. DATE
Number Date

© 2017 RYAN A+E, INC.

DRAWN BY CHECKED BY
Author Checker
JOB NO. DATE
700420 Issue Date

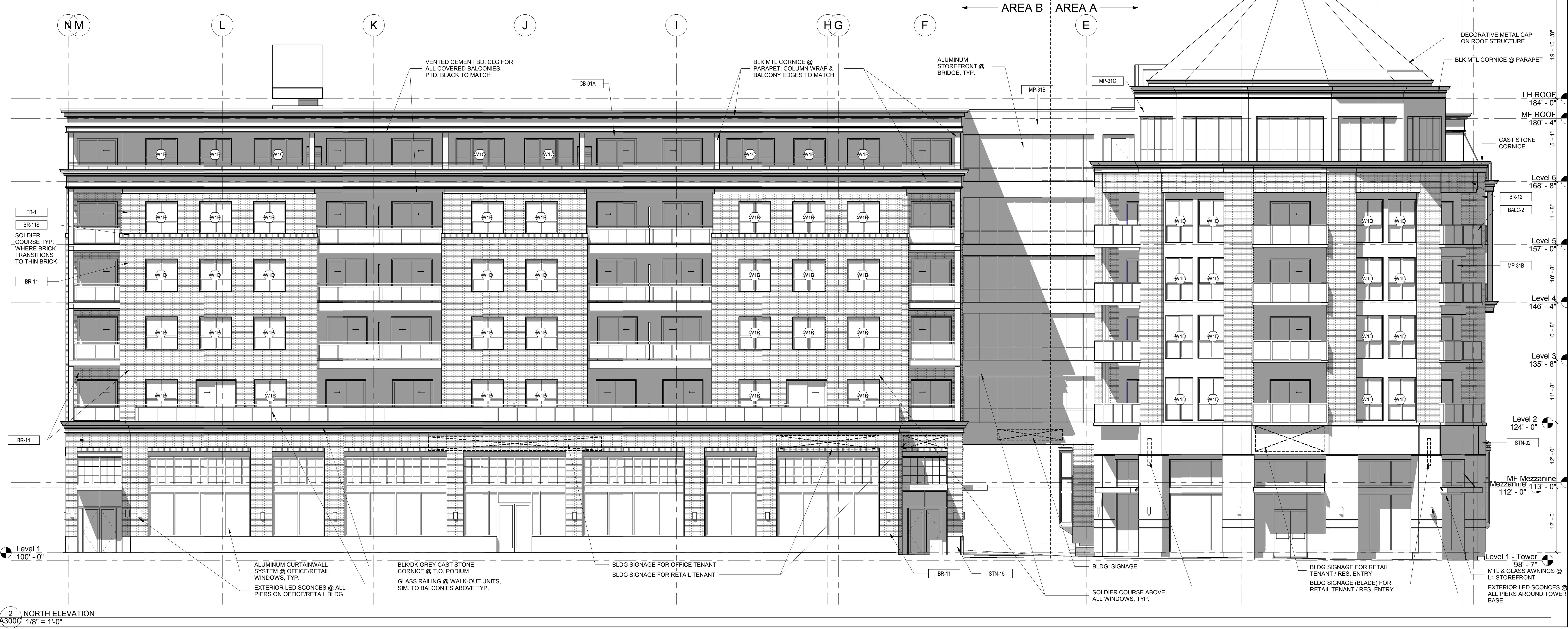
ISSUE RECORD
ISSUE # | DATE | DESCRIPTION

PRELIMINARY
NOT FOR CONSTRUCTION

LAND USE SUBMITTAL
12.15.2017

EXTERIOR ELEVATIONS - AREA B

A300C



2 NORTH ELEVATION
A300C 1/8" = 1'-0"

12/18/2017 12:36:31 PM

MATERIAL ID	SECTION	DESCRIPTION	UNIFORMAT
ALUM-2	06 73 00	Metal - Privacy Screen	
APC-1		APC-1 Architectural Precast Concrete - (BLACK)	
BALC-1		Metal - Aluminum - Balcony (BALC-1)	
BR-11		BR-11 Face Brick - Norman, 1/2 lap running bond (WHITE)	
BR-12		BR-12 Face Brick - Norman, 1/2 lap running bond (BUFF)	
CAP-2		Metal - Metal Coating 2 - CAP-2	
CB-01A		CB-01A Siding - Fiber-cement - smooth panels (BLACK)	
CW-01		CW-01 Aluminum Curtain Wall - Field-glazed pressure wall, thermally broken, stick built	
GL-21	08 81 00	GL-21 - Glass - Insulating - Low-E coating, argon filled clear	
GL-21T	08 81 00	GL-21T - Glass - Insulating - Tempered - Low-E coating, argon filled clear	
LVR-1		Louder - Magic Pack (BROWN)	
LVR-2		Louder - Magic Pack (BLACK)	
LVR-3		Louder - Magic Pack (WHITE)	
MP-31A		MP-31A Wall panels - ACM - clip installation (WHITE)	
PT-01		PT-1 - Typical exterior paint (black/ok grey)	
STN-15		STN-15 Stone - Granite - polished finish, black mesabe	
TB-1		TB-1 Trim Brick - Norman, 1/2 lap running bond (WHITE)	
TR-1		Finishes - Exterior Trim 1 TR-1	
WIN FG-1		WIN FG-1 Fiberglass windows - (Fixed, outswing, single-hung)	

EXTERIOR ELEVATION GENERAL NOTES

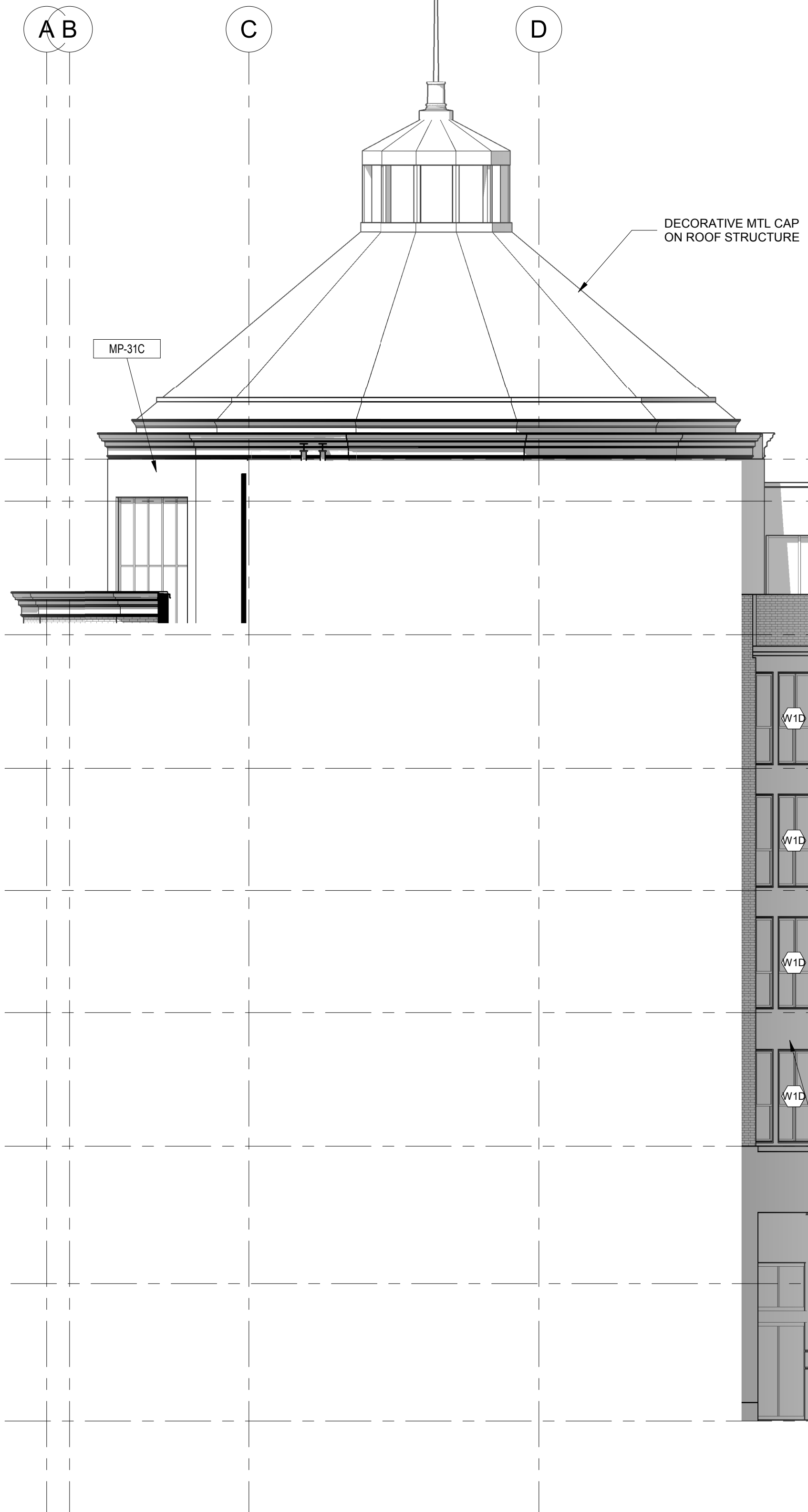
- RESIDENTIAL UNIT WINDOWS - FIBERGLASS SINGLE HUNG WITH DIVIDED UPPER LIGHT WHERE INDICATED ON ELEVATIONS.
- WHERE RESIDENTIAL UNIT WINDOWS/DOORS OCCUR IN BRICK OR THIN BRICK WALL, TYPICAL DETAILS AS FOLLOW:
A. CAST STONE SILL (COLOR TO MATCH SURROUNDING BRICK)
B. MODULAR BRICK SOLDIER COURSE AT HEAD
- RESIDENTIAL UNIT BALCONY DOORS - FIBERGLASS SLIDING WITH MUNTIN PATTERN WHERE SHOWN ON ELEVATIONS.
- MONUMENTAL WINDOWS AT GROUND FLOOR COMMON SPACES - ALUMINUM STOREFRONT.
- OFFICE / RETAIL WINDOWS - ALUMINUM CURTAIN WALL, BLACK OR DARK BRONZE, MUNTIN PATTERN AS SHOWN ON ELEVATIONS.
- ASSUME 36" STONE BASE AT ALL WALLS UNLESS OTHERWISE INDICATED ON ELEVATIONS.
- ASSUME METAL GUTTERS AND DOWNSPOUTS FOR ALL SLOPED ROOFS.
- ASSUME PAVERS, RAILINGS (ALUMINUM OR GLASS AS SHOWN ON ELEVATIONS), AND PRIVACY SCREENS AT ALL RESIDENTIAL TERRACES.
- SEE SHEET G101 FOR MATERIAL ID.
- REFER TO SHEET A504 FOR EXTERIOR TRIM LEGEND.

FACADE MATERIALS

SOUTH - AREA B			WEST - AREA B		
BRICK	5,640 SF	35%	BRICK	5,640 SF	54%
METAL PANEL	2,100 SF	13%	METAL PANEL		0%
FIBER CEMENT	1,610 SF	10%	FIBER CEMENT	380 SF	6%
STONE	480 SF	4%	STONE	300 SF	4%
GLAZING	6,120 SF	38%	GLAZING	2,500 SF	36%



2 WEST ELEVATION - AREA B
A300D 1/8" = 1'-0"



1 SOUTH ELEVATION - AREA B
A300D 1/8" = 1'-0"



RYAN A+E, INC.
533 South Third Street, Suite 100
Minneapolis, MN 55415
612-492-4000 fax
612-492-3000 fax

WWW.RYANCOMPANIES.COM

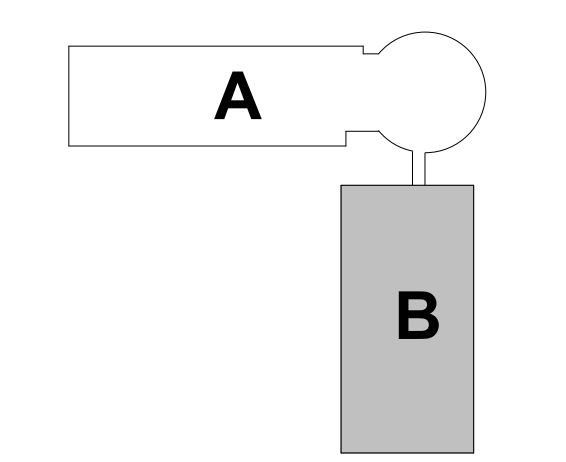
OWNER



CONSULTANTS



KEY PLAN



PROJECT INFORMATION

Sons of Norway - North Building

1455 W Lake St
Minneapolis, MN 55408

I hereby certify that this plan, specification, or report was prepared by me or under my direct supervision and that I am a duly Registered Architect under the laws of the State of Minnesota

Name _____

REGISTRATION NO. _____ DATE _____
Number _____ Date _____

© 2017 RYAN A+E, INC.

DRAWN BY _____ CHECKED BY _____
Author _____ Checker _____
JOB NO. _____ DATE _____
700420 _____ Issue Date _____

ISSUE RECORD

ISSUE #	DATE	DESCRIPTION

PRELIMINARY NOT FOR CONSTRUCTION

LAND USE SUBMITTAL
12.15.2017

EXTERIOR ELEVATIONS - AREA B

A300D

12/18/2017 12:59:15 PM